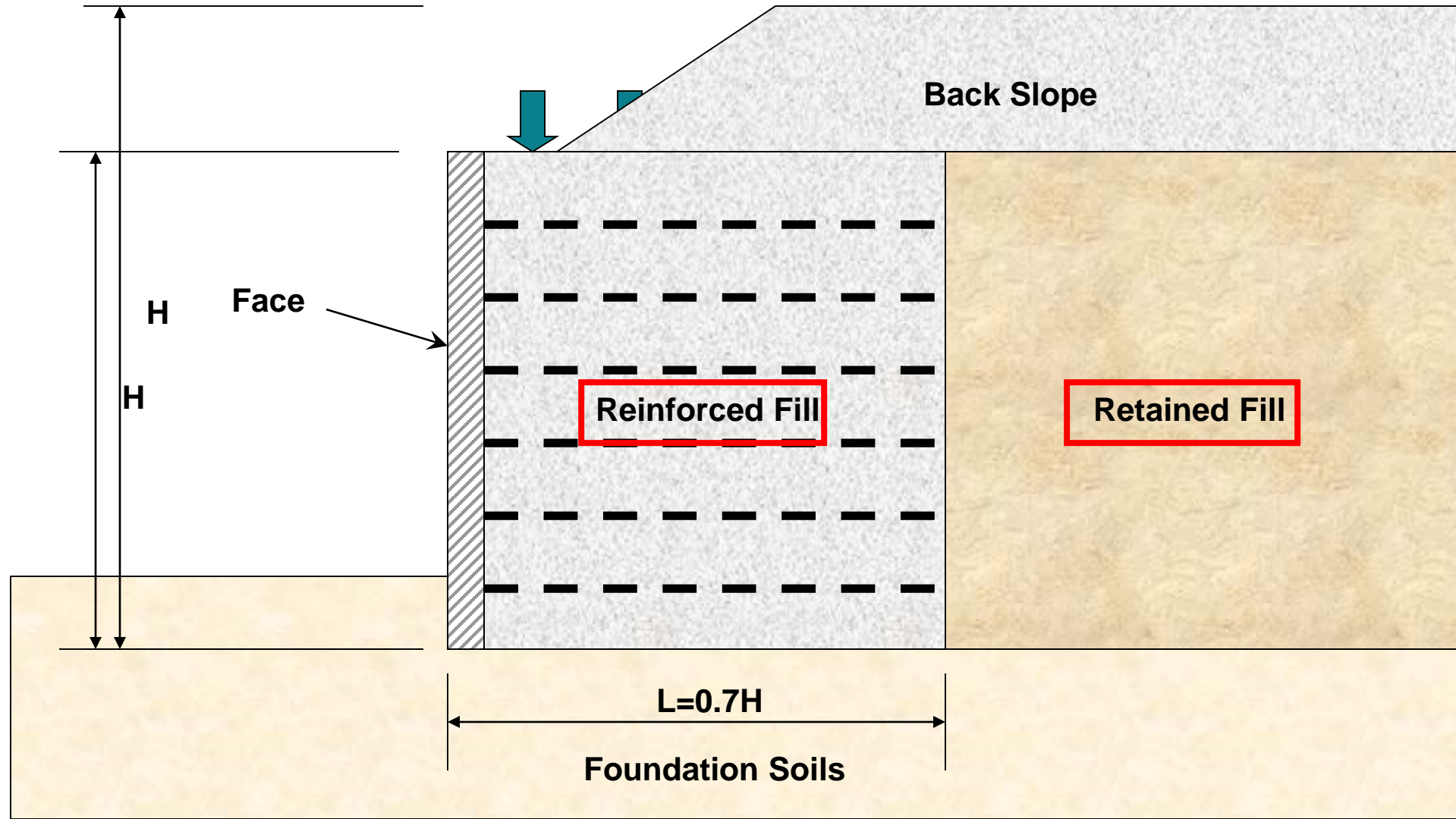
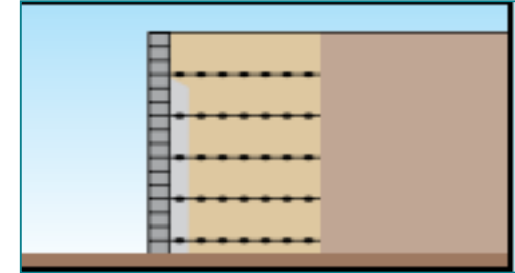


TensarTech Structural Systems - Earth Retaining



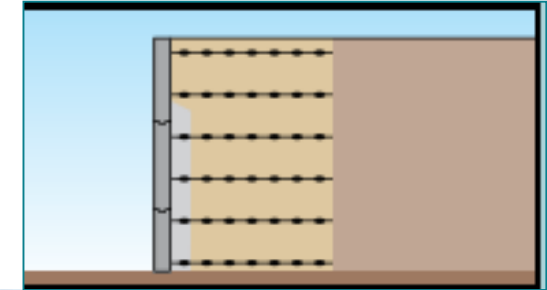
TensarTech TW Modular Concrete Block

82° to 90°

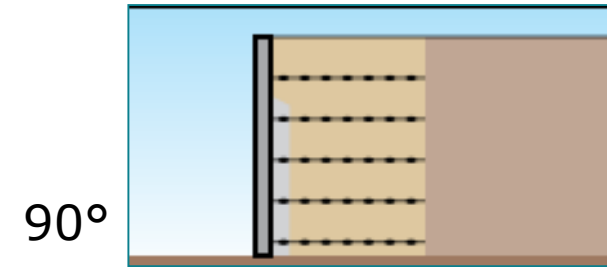


TensarTech ARES Panel - Incremental

90°



TensorTech Panel - Full Height

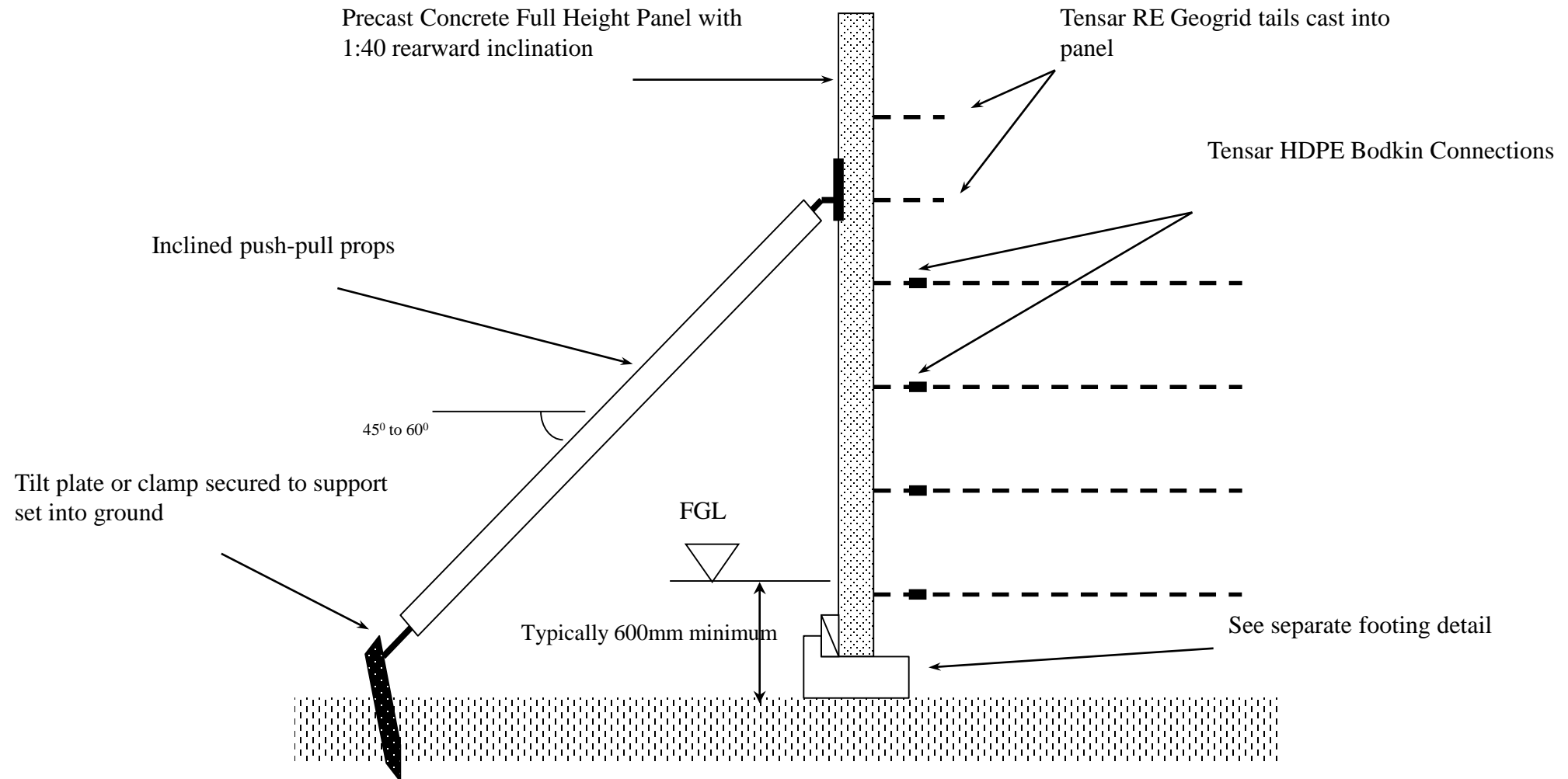


Full Height Panels

Tensar®



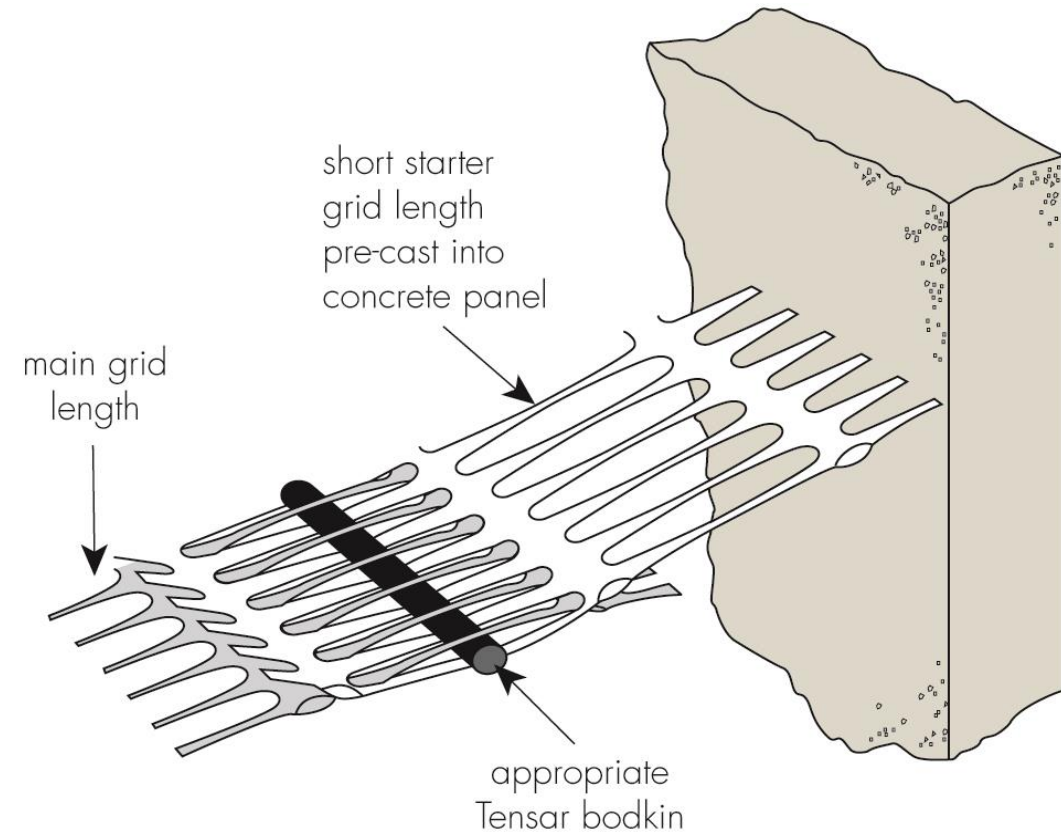
Typical Section





Full Height Panels

Tensar®









Full Height Panels

Tensar®



1981 Sunderland, UK



1994 India



2007 Czech



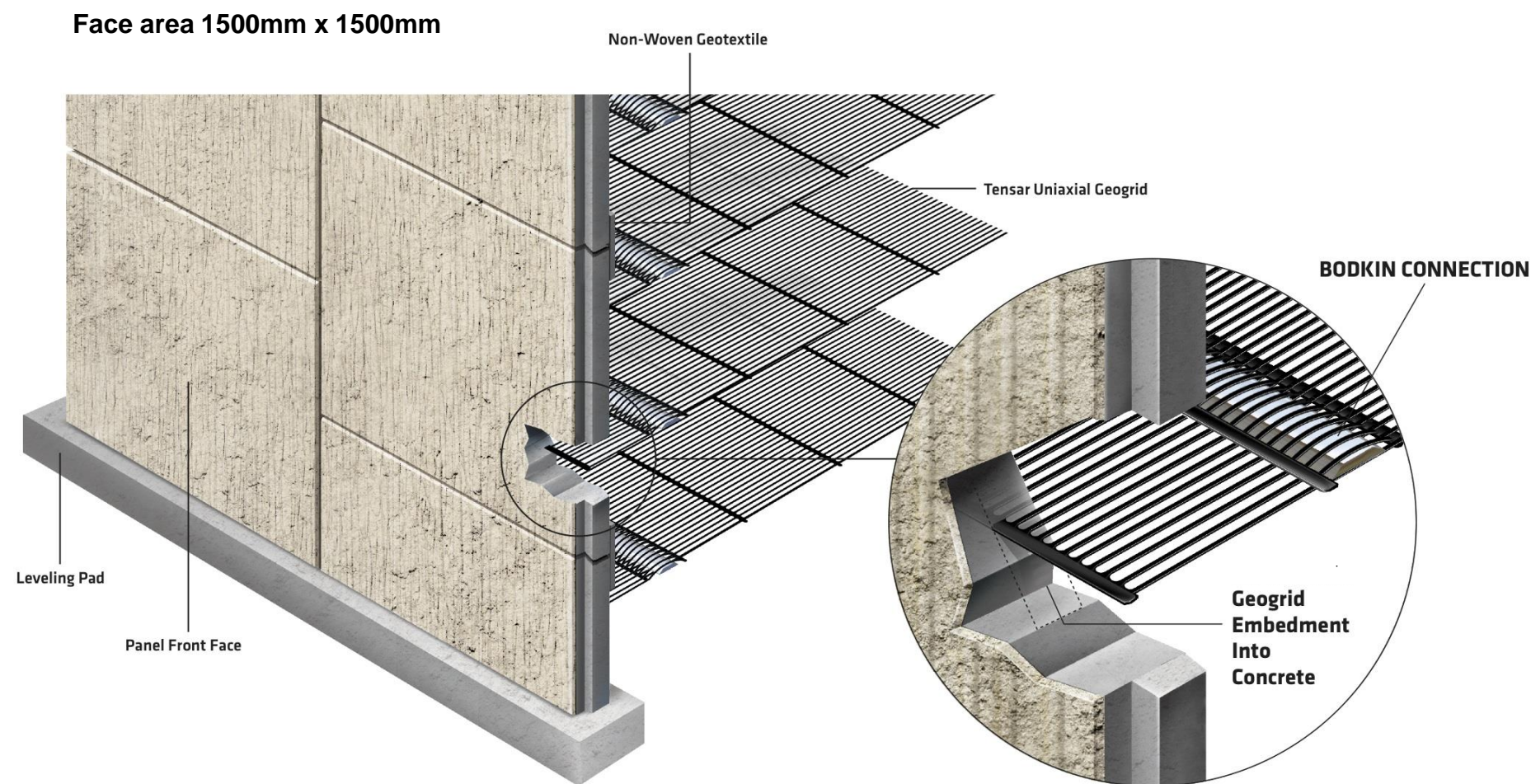
2011 Poland





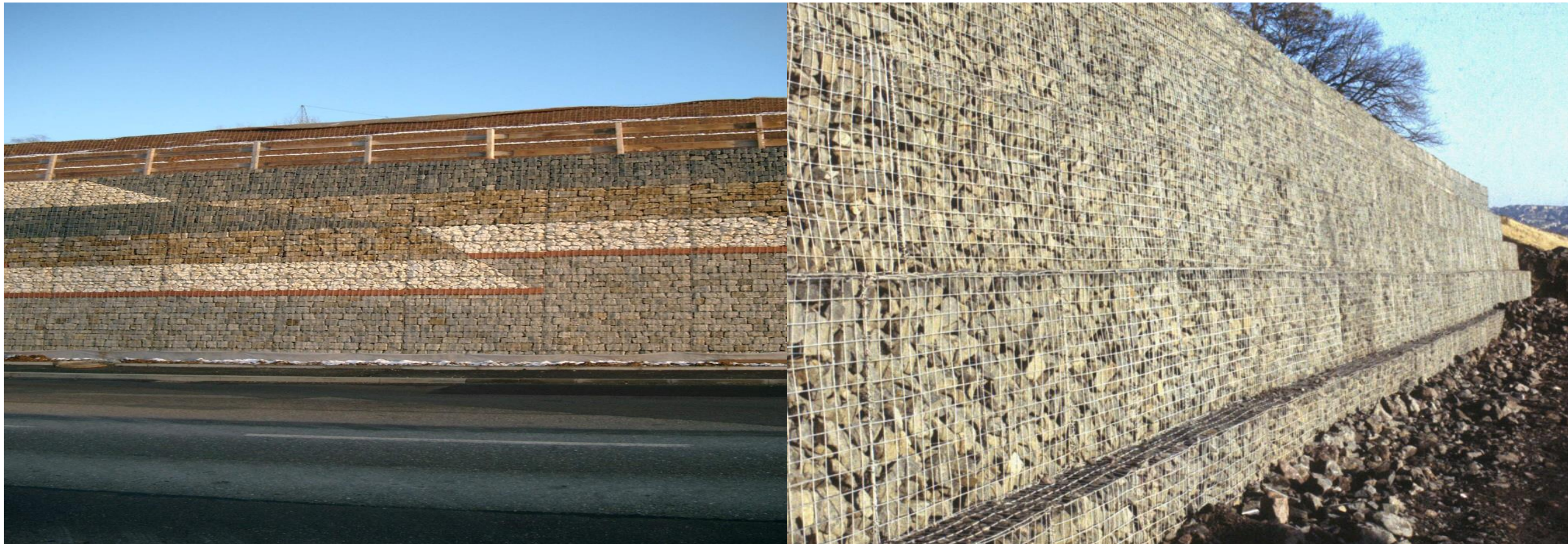
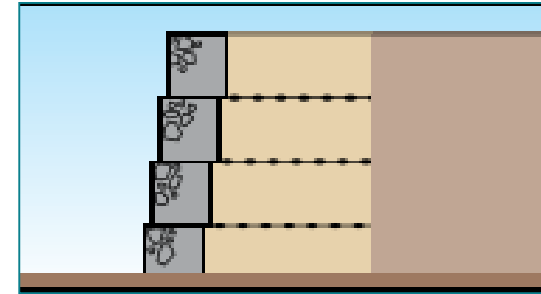


- Proven Incremental concrete panel wall system from the Americas
- 100% synthetic reinforced panel system
- Currently approved by most US states and Canadian Provinces
- Panel Sizes 1.5m x 1.5m or full height panels - full height panels are typically used for walls less than 10m.



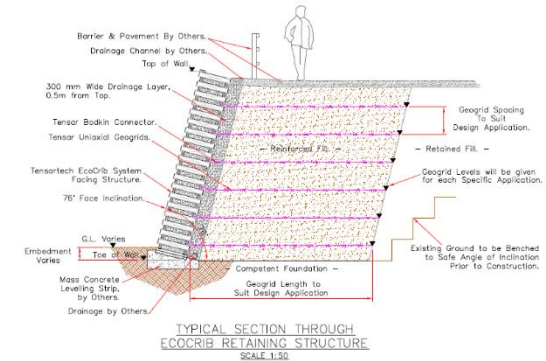
TensorTech RockWall

70° to 84°



TensarTech EcoCrib

76°



TensarTech Modular Block Wall Systems

Tensar®



Facing Block

+



Connector

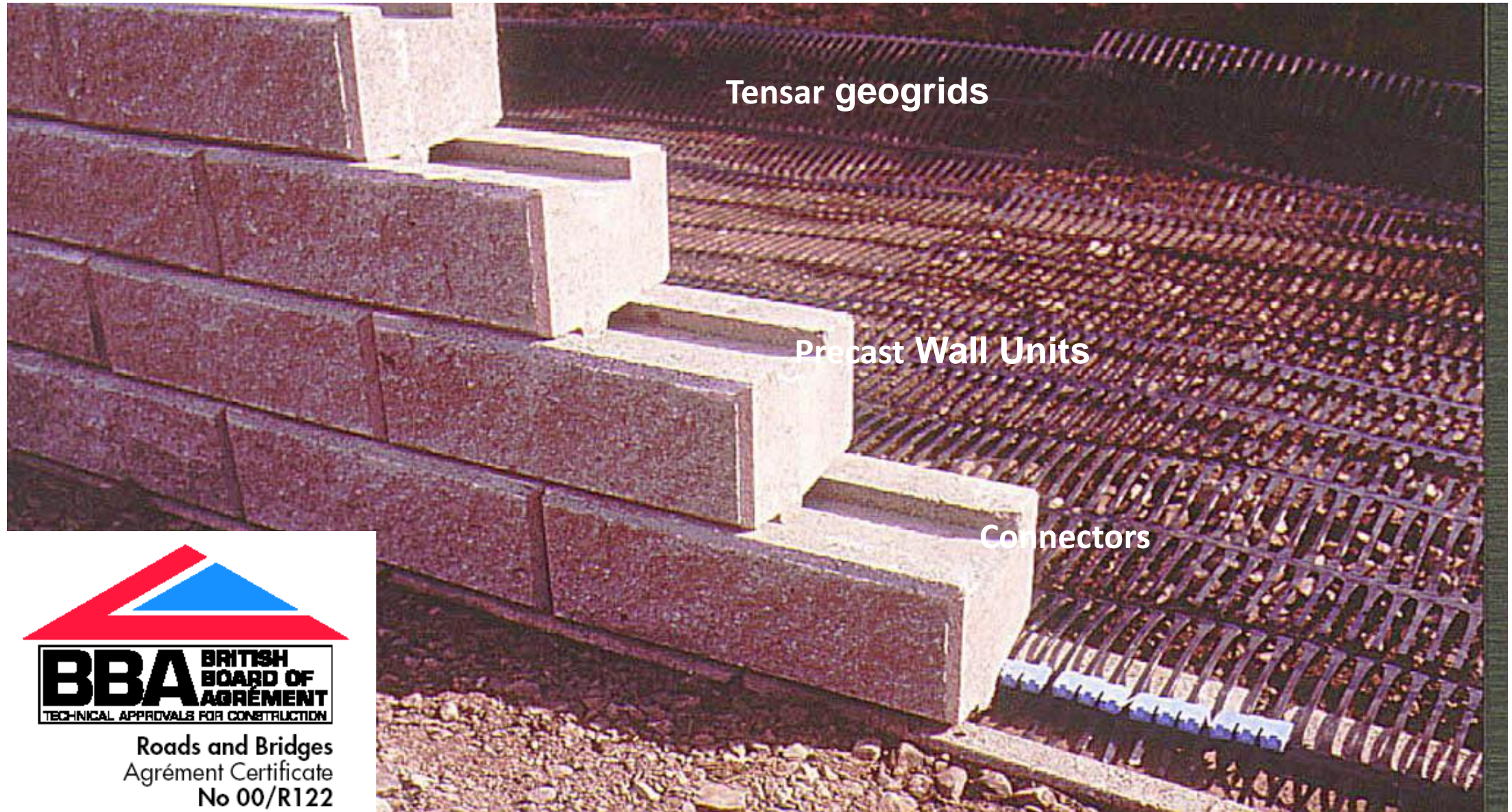
+



Tensar Uniaxial
Geogrid



A fully engineered modular block
wall system



- Standard 86°



Case Study

Ref 218

Mechanical connection



TensarTech TW1 Wall System

Tensar®



TensarTech TW1 Wall System

Tensar®

